

**Bryan Radiology Associates
CT SACRUM W**

Last update: 2021-01-03 JN

Setup:

- Scout from below the coccyx through L1 with the patients arms raised above their head
- Place bismuth thyroid and/or breast shield after scout(s) have been acquired

Contrast:

- inject 100 ml of 350 mg iodine/ml non-ionic contrast @ 2 ml/sec with a 45 second delay

Scan Parameters:

- Scan from below the coccyx to L4
- DFOV should include SI joints
- For patients with implanted spinal hardware and/or a BMI ≥ 35 it is suggested that increasing kVp, slowing rotation time, and decreasing the pitch will help maintain image quality

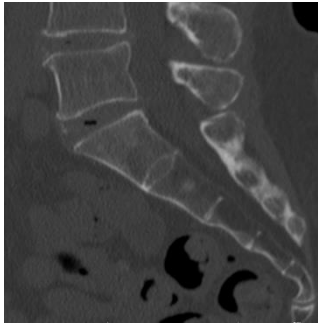
PACS:

- topogram
- 2 x 2 mm AX soft tissue
- 2 x 2 mm AX Bone **kernel**
- 2 x 2 mm SAG soft tissue
- 2 x 2 mm SAG Bone **kernel**
- 2 x 2 mm COR soft tissue
- 2 x 2 mm COR Bone **kernel**

See next page for diagrams

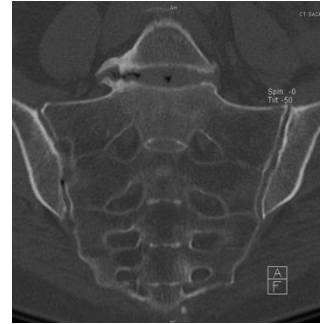


AX soft tissue



SAG

AX bone kernel



COR

CTDI: ~ 15-30 mGy

Adapted from ARA